



ARKANSAS SCHOOL

FOR MATH, SCIENCES, + THE ARTS

2020-21 SCHOOL PROFILE



Arkansas' Premier Public High School

The Arkansas School for Mathematics, Sciences, and the Arts is a specific investment by the General Assembly in the state's most talented and promising young minds. Each year, 10th-, 11th-, and 12th-grade students from across Arkansas come to ASMSA to live and learn within a community of 230 intellectual peers. The residential experience combines college-level coursework, dynamic faculty, advanced research opportunities, diverse experiences within the arts, study abroad trips, and more to create an educational community unlike any other in Arkansas.

Student Transcripts

ASMSA issues a unified transcript that reflects coursework from both the sending school and ASMSA. Transcripts include grades earned from students' freshman and sophomore years of high school from their local, community schools as well as coursework completed in residence during their junior and senior years at ASMSA.

Unweighted GPAs are reported on a 4.0 scale. Weighted GPAs are tabulated for colleges that consider them. A quality point is added for each course completed for concurrent credit taken through University of Arkansas at Fort Smith as well as additional high school courses approved for weighted credit by the Arkansas Department of Education's Division of Elementary and Secondary Education.

Concurrent courses receiving either 3 or 4 hours of college credit are awarded 1 unit of ASMSA credit toward completion of high school graduation requirements per ADE regulations. Because the majority of disciplinary events are related to unique community standards and expectations, ASMSA does

not report discipline as part of the college admissions process. Due to the selective nature of ASMSA and the overall strength of our student body, **ASMSA does not calculate students' class ranks.**

COVID-19 Statement

ASMSA suspended its residential experience and transitioned to remote learning on March 13, 2020, as a result of the COVID-19 pandemic. Because of this sudden transition, all elective coursework for the semester was graded on a Credit/Fail (CR/F) system for the spring 2020 semester. Due to a revised UA-Fort Smith policy, students could also elect to receive a Pass/Fail (CR/F) grade for UAFS/ASMSA concurrent coursework or elect for the letter grade. ASMSA waived the usual five-course minimum to allow students to focus their energies on necessary courses amid remote learning.

Despite these unusual circumstances, ASMSA will still be offering a robust and rigorous curriculum. For the fall 2020 semester, ASMSA is facilitating residential, online, and hybrid courses to students. Regardless of instructional method, all courses will follow a structured schedule to allow for a synchronous approach. Research-intensive courses, regardless of the instructional method, will still offer laboratory experiences. To better accommodate proper social distancing, the needs of remote learners, and the potential for unexpected disruptions to the learning environment, ASMSA gave precedence to graduation requirements over elective courses when creating the semester's course schedule.

ACT Range

31

High (75%)

28.8

Mean Composite

26

Low (25%)

Unweighted GPA Range

3.97

High (75%)

3.84

Mean GPA

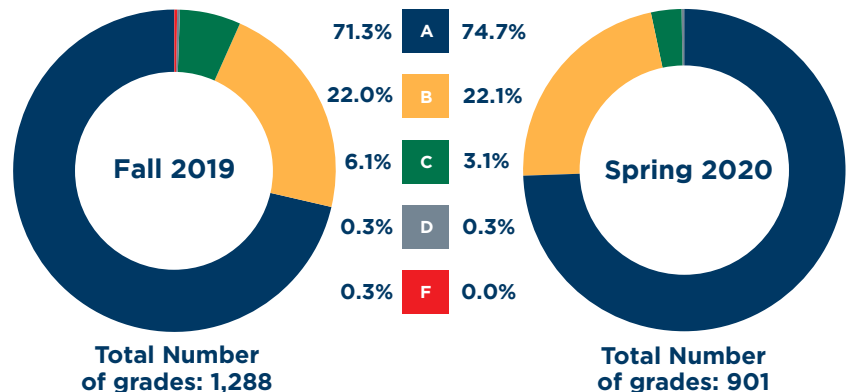
3.75

Low (25%)

Scores updated August 2020

At present, the Class of 2021 includes 99 students.

GRADE DISTRIBUTION



CEEB Code: 041148

200 Whittington Ave.
Hot Springs, AR 71901
Main Phone: 501-622-5100
Fax: 501-622-5179
Web: www.asmsa.org
Social: /ARMathSciArts

Office of Student Success

Erica Arivette, Student Success Coordinator
arivettee@asmsa.org; 501-622-5175
Penny Lock, Student Success Coordinator
lockp@asmsa.org; 501-622-5176
Bret Vallun, Student Success Coordinator
vallunb@asmsa.org; 501-622-5129

Campus Leadership

Corey Alderdice, Director
alderdicec@asmsa.org; 501-622-5115
Stuart Flynn, J.D., Dean of Academic Affairs
flynns@asmsa.org; 501-622-5111
Rheo Morris, Ph.D., Dean of Students
morrisr@asmsa.org; 501-622-5174





ARKANSAS SCHOOL

FOR MATH, SCIENCES, + THE ARTS

2020-21 SCHOOL PROFILE



Academic Engagement through a “College Bridge” Experience

ASMSA offers a “college bridge” program where each student earns at least 30 hours of college credit through our partnership with UA–Fort Smith. ASMSA’s Concurrent Core consists of classes across composition, literature, history, global languages, math, biology, chemistry, physics, and computer science. Students must also satisfy state graduation requirements, in social sciences, art, and other subjects. Nearly 70 courses are available for college credit. ASMSA has chosen to pursue partnership credit instead of Advanced Placement coursework in order to provide our talented faculty with the flexibility to create a more dynamic and engaging set of classroom experiences for students.



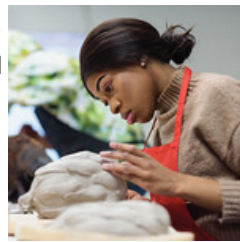
College Readiness through Residential Education

While college readiness is often defined by ACT benchmarks or other standardized exams, the residential experience offered to ASMSA students emphasizes independent living, autonomous decision-making, leadership development, cultural diversity, emotional wellness, and other life skills. As students transition to life on college and university campuses, their residential education is equal to their classroom experiences in preparing them for the steps ahead.



Capstone Projects and Learning Beyond the Classroom

ASMSA students have the opportunity to conduct real-world explorations guided by faculty mentors. Students invested in STEM disciplines complete a research project on a subject of their choice, often leading to recognition at the state and international science fairs. Arts and Humanities students have the option of completing a Humanities Symposium project or a portfolio of creative works. Students interested in entrepreneurship engage with statewide industry leaders and growing startups as well as participate in business pitch competitions that introduce them to the basics of establishing their own sbusiness venture.



Study Abroad and Global Learning

ASMSA’s Global Learning Program opens doors of possibility to students as they explore other languages and cultures through multiple study abroad excursions and visits from international guests. Students are also selected annually for immersion programs like the National Security Language Initiative for Youth. Over the past seven years, more than 500 ASMSA students have studied abroad.



EARNING NATIONAL RECOGNITION

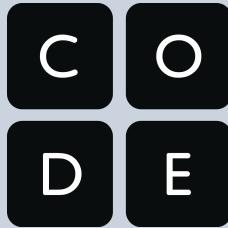
ASMSA has consistently earned recognition as one of the nation’s top public high schools.



Recipient of 2019 NCSST Innovative Program Partnership Award



21st nationally in Study.com’s list of top STEM high schools



Recognized by Code.org as a Champion of Computer Science

INSTITUTIONAL ACCOLADES

99%

College Matriculation or Military Enlistment

39

students have represented Arkansas at the Intel ISEF over the past five years, including 12 who earned recognition.

5

members of the Class of 2021 have been named National Merit Semifinalists.

\$266

million in college scholarships have been awarded to ASMSA alumni.

STUDENT DIVERSITY

35%

of students are from families qualifying for federal school meal programs.

32%

of recent graduates come from Arkansas Delta counties.

29%

of recent graduates are on the path to becoming the first member of their family to earn a college degree.

37%

identify as students of color.

Ethnicity	Total	Percentage	Arkansas Percentage
American Indian	0	0.0%	1.0%
Asian	32	13.5%	1.7%
African–American/Black	20	8.5%	15.7%
Hispanic/Latino	7	3.0%	7.7%
Caucasian/White	149	63.4%	72.2%
Multiple/Other	28	11.9%	2.2%



ARKANSAS SCHOOL

FOR MATH, SCIENCES, + THE ARTS

2020-21 SCHOOL PROFILE



SIX WAYS ASMSA PREPARES STUDENTS FOR COLLEGE AND BEYOND



Close Contact
ASMSA has a faculty-to-student ratio of 1:9 and counselor-to-student ratio of 1:77.



Real-World Research
All students undertake and complete an independent capstone project spanning junior and senior years.



College-Level Academics
ASMSA graduates finish high school with an average of 50 hours of college credit.

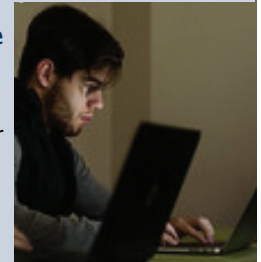
Diverse Learners
ASMSA has the highest percentage of low-income students at any of the nation's 16 public residential STEM schools.



Global Citizens
ASMSA is committed to international engagement through study abroad, language immersion, and other partnerships.



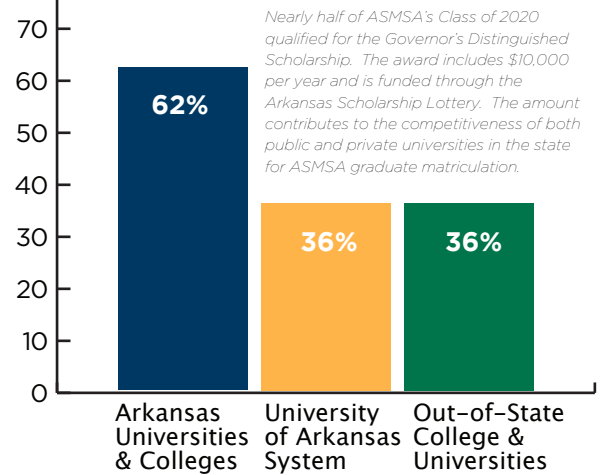
Coding the Future
ASMSA is the only high school in Arkansas to require a computer science class in order to graduate.



COLLEGE MATRICULATION CLASSES 2018-2020

- | | | |
|---|----------------------------------|-----------------------------------|
| Arkansas State University | Kansas City Art Institute | Tulane University |
| Arkansas Tech University | Kansas State University | U.S. Air Force Academy |
| Baylor University | Louisiana Tech University | U.S. Merchant Marine Academy |
| Berea College | Loyola University | University of Alabama |
| Boston University | Luther College | University of Alabama-Huntsville |
| Bowdoin College | Lyon College | University of Arizona |
| Bryn Mawr College | Marquette University | Univ. of Arkansas-Fayetteville |
| Carleton College | Mass. Institute of Technology | Univ. of Arkansas-Fort Smith |
| Case Western Reserve University | Milwaukee School of Engineering | Univ. of Arkansas-Little Rock |
| Centenary College | Mississippi College | University of California at Davis |
| Christian Brothers University | Mississippi State University | University of Central Arkansas |
| Clark Atlanta University | Missouri State University | University of Chicago |
| Colby College | Murray State University | University of Denver |
| Colorado College | Northwestern University | Univ. of Michigan-Ann Arbor |
| Columbia University | Norwich University | University of Mississippi |
| Cornell University | Ohio State University | University of New Orleans |
| Cornish College of the Arts | Oklahoma State University | University of Oklahoma |
| CUNY John Jay's College of Criminal Justice | Ouachita Baptist University | University of Pennsylvania |
| Dartmouth College | Pace University | University of Richmond |
| Doshisha University | Pomona College | University of Texas-Austin |
| Drury Univ. Honors College | R.I. School of Design/Parsons | University of the Ozarks |
| Emory University | Rhodes College | University of Tulsa |
| Georgetown University | Rice University | University of Utah |
| Ga. Institute of Technology | Savannah College of Art & Design | Vanderbilt University |
| Harding University | Southern Arkansas University | Vanderbilt University |
| Hawaii Pacific University | Southern Methodist University | Vassar College |
| Henderson State University | St. Louis College of Pharmacy | Wabash College |
| Hendrix College | Stanford University | Washington and Lee University |
| Hollins University | Tougaloo College | Washington University-St. Louis |
| Howard University | Trinity University | Westminster College |
| | | Xavier University of Louisiana |

FIVE-YEAR MATRICULATION RATES



COLLEGE MAJORS OF CHOICE CLASSES OF 2018-2020 GRADUATES

