



ARKANSAS SCHOOL

FOR MATH, SCIENCES, + THE ARTS

2024-25 SCHOOL PROFILE



Arkansas' Premier Public High School

The Arkansas School for Mathematics, Sciences, and the Arts is a specific investment by the General Assembly in the state's most talented and promising young minds. Each year, 10th-, 11th-, and 12th-grade students from across Arkansas come to ASMSA to live and learn within a community of 250 intellectual peers. The residential experience combines college-level coursework, dynamic faculty, advanced research opportunities, diverse experiences within the arts, study abroad trips, and more to create an educational community unlike any other in Arkansas.

School Mission

The Arkansas School for Mathematics, Sciences, and the Arts, a campus of the University of Arkansas System, is a public residential high school serving academically and artistically motivated students of all backgrounds from throughout the state. ASMSA's community of learning exemplifies excellence across disciplines while serving as a statewide center of academic equity and opportunity that ignites the full potential of Arkansas' students and educators.

Student Transcripts

ASMSA's main point of entry is for juniors, but two focused programs for sophomore enrollment exist. ASMSA issues a unified transcript that includes high school coursework from both the sending school and ASMSA that reflects the appropriate grade level of academic achievement at their local, community school as well as coursework completed in residence during their two or three years at ASMSA.

Unweighted GPAs are reported on a 4.0 scale. Weighted GPAs are tabulated for colleges that consider them. A quality point

is added for each course completed for concurrent credit taken through University of Arkansas at Fort Smith as well as additional high school courses approved for weighted credit by the Arkansas Department of Education's Division of Elementary and Secondary Education. Concurrent courses receiving either 3 or 4 hours of college credit are awarded 1 unit of ASMSA credit toward completion of high school graduation requirements per ADE regulations.

Because the majority of disciplinary events are related to unique community standards and expectations, ASMSA does not report discipline as part of the college admissions process. Due to the selective nature of ASMSA and the overall strength of our student body, **ASMSA does not calculate students' class ranks.**

Statement on Excellence Gaps and Equity

Even as a selective admissions high school, ASMSA recognizes that promising students often experience "excellence gaps" between what they are capable of learning and the opportunities available to them in their prior sending school. As a result, some students may not be able to advance as far into ASMSA's college-level curriculum and higher-level STEM courses as others. ASMSA practices a conservative approach to course placement to help ensure a productive transition into our community of learning while recognizing that our program is simply the next step in a lifetime of learning for these outstanding young people.

Statement on Impact of COVID-19

Students enrolled in ASMSA's Class of 2025 experienced the most disruptive period of the pandemic during the transition between middle and high school. Due to ASMSA's enrollment structure—wherein the majority of students enroll at 11th grade—this often meant that current seniors experienced significant inconsistency in the level of support, academic experience, and institutional adjustments based on the resources available at their sending high schools. ASMSA has attempted to adjust for this academically, but there are cases where students were not as positioned to accelerate to their full potential based on previously available opportunities.

ACT Range	Unweighted GPA Range
31 High (75%)	3.97 High (75%)
28.2 Mean Composite	3.84 Mean GPA
26 Low (25%)	3.78 Low (25%)

Scores updated September 2024

At present, the Class of 2025 includes 96 students.



CEEB Code: 041148

200 Whittington Ave.
Hot Springs, AR 71901
Main Phone: 501-622-5100
Fax: 501-622-5108
Web: asmsa.org
Social: /ARMathSciArts

Office of Student Success

Erica Arivette, Student Success Coordinator
arivettee@asmsa.org; 501-622-5175
Adrienne Conley, Coord./Scholar Development
conleya@asmsa.org; 501-622-5280
Penny Lock, Student Success Coordinator
lockp@asmsa.org; 501-622-5176

Campus Leadership

Corey Alderdice, Executive Director
alderdicec@asmsa.org; 501-622-5115
Stuart Flynn, J.D., Dean of Academic Affairs
flynns@asmsa.org; 501-622-5111
Bret Vallun, Assoc. Dean/College Counseling
vallunb@asmsa.org; 501-622-5129





ARKANSAS SCHOOL

FOR MATH, SCIENCES, + THE ARTS

2024-25 SCHOOL PROFILE



Academic Engagement through a “College Bridge” Experience

ASMSA offers a “college bridge” program where each student earns at least 30 hours of college credit through our partnership with UA–Fort Smith. ASMSA’s Concurrent Core consists of classes across composition, literature, history, global languages, math, biology, chemistry, physics, and computer science. Students must also satisfy state graduation requirements in social sciences, art, and other subjects. Nearly 70 courses are available for college credit. ASMSA has chosen to pursue partnership credit instead of Advanced Placement coursework in order to provide our talented faculty with the flexibility to create a more dynamic and engaging set of classroom experiences for students.



College Readiness through Residential Education

While college readiness is often defined by ACT benchmarks or other standardized exams, the residential experience offered to ASMSA students emphasizes independent living, autonomous decision-making, leadership development, cultural diversity, emotional wellness, and other life skills. As students transition to life on college and university campuses, their residential education is equal to their classroom experiences in preparing them for the steps ahead.



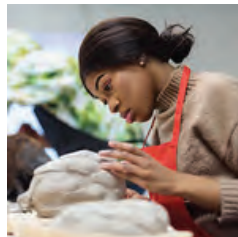
Capstone Projects and Learning Beyond the Classroom

ASMSA students have the opportunity to conduct real-world explorations guided by faculty mentors. Students invested in STEM disciplines complete a research project on a subject of their choice, often leading to recognition at the state and international science fairs. Arts and Humanities students have the option of completing a capstone project or a portfolio of creative works. All students are encouraged to participate in prominent state, regional, and national competitions that provide an opportunity to share their research and talents with an external community as well as receive peer and professional feedback.



Visual Arts and Design Program of Distinction (POD)

In recent years, ASMSA has made significant investments to expand faculty, courses, and opportunities in the Arts. This includes the POD, a special pathway for students to explore an intentional program of study in visual arts. Students must still satisfy all Arkansas Graduation Requirements as well as earn a minimum of 30 hours concurrent college credit through the University of Arkansas at Fort Smith.



EARNING NATIONAL RECOGNITION

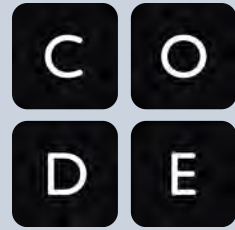
ASMSA has consistently earned recognition as one of the nation’s top public high schools.



#1 in Best Public High Schools in Arkansas and #46 nationally in 2024 Niche.com rankings



#21 nationally in Study.com’s list of top STEM high schools



Recognized by Code.org as a Champion of Computer Science

INSTITUTIONAL ACCOLADES

100%

College Matriculation or Military Enlistment

36

students have represented Arkansas at the Intel ISEF over the past five years, including 2 Regeneron STS Scholars.

4

members of the Class of 2025 have been named National Merit Semifinalists.

\$328

million in college scholarships have been awarded to ASMSA alumni.

STUDENT DIVERSITY

40%

of students are from families qualifying for federal school meal programs.

41%

of recent graduates come from Arkansas Delta counties.

34%

of recent graduates are on the path to becoming the first member of their family to earn a college degree.

41%

identify as students of color.

Ethnicity	Total	Percentage	Arkansas Percentage
American Indian	0	0.0%	1.0%
Asian	35	14.3%	1.7%
African–American/Black	20	8.2%	15.7%
Hispanic/Latino	15	6.2%	7.7%
Caucasian/White	136	55.7%	72.2%
Multiple/Other/Unknown	38	15.4%	2.2%



ARKANSAS SCHOOL

FOR MATH, SCIENCES, + THE ARTS

2024-25 SCHOOL PROFILE



SIX WAYS ASMSA PREPARES STUDENTS FOR COLLEGE AND BEYOND



Close Contact
ASMSA has a faculty-to-student ratio of 1:7 and counselor-to-student ratio of 1:61.



Real-World Research
All students undertake and complete an independent capstone project spanning junior and senior years.



College-Level Academics
ASMSA graduates finish high school with an average of 50 hours of college credit.

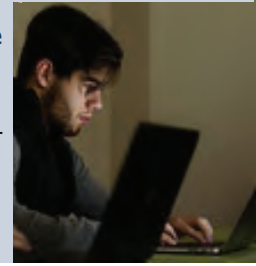
Diverse Learners
ASMSA has the highest percentage of low-income students at any of the nation's 17 public residential STEM schools.



Global Citizens
ASMSA is committed to international engagement through study abroad, language immersion, and other partnerships.

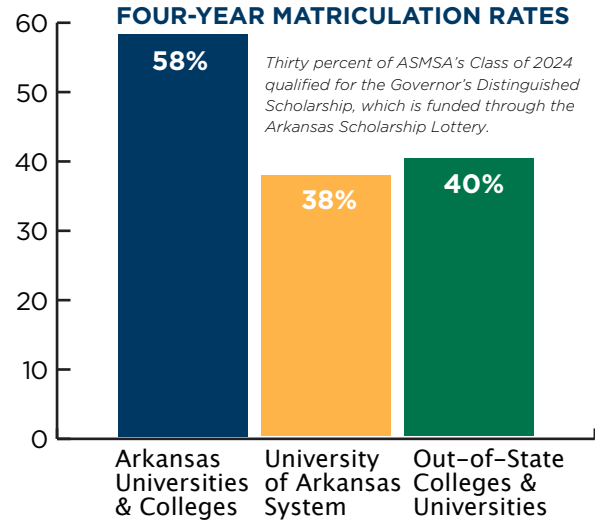


Coding the Future
ASMSA was the first high school in Arkansas to require a computer science class in order to graduate.

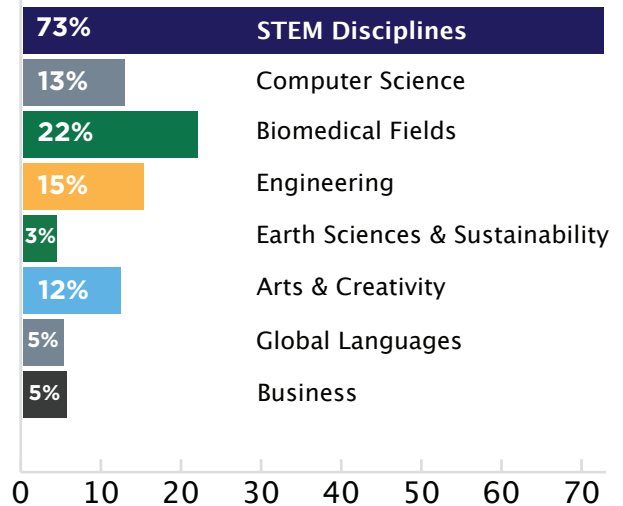


COLLEGE MATRICULATION CLASSES 2021-2024

Agness Scott College	Emory University	Mississippi State University	Syracuse University	Univ. of Michigan
Alabama A&M University	George Washington University	Missouri State University	Tennessee State University	University of Mississippi
Amherst College	Georgia Tech University	Muhlenberg College	Texas A & M University	Univ. of Missouri
Arkansas State University	Grinnell College	National Park College	Thomas Jefferson University	University of Missouri Science and Technology
Arkansas Tech University	Harvey Mudd College	New York University	Tufts University	University of Missouri-Kansas City
Ball State University	Henderson State University	North Arkansas College	University of Alabama	University of New England
Bates College	Hendrix College	Northeastern University	Univ. of Arkansas - Fayetteville	Univ. of Oregon
Baylor University	High Point University	Northwestern University	University of Arkansas-Fort Smith	University of Pennsylvania
Boston College	Hollins University	Oklahoma State University	University of Arkansas-Little Rock	University of Richmond
Boston University	Howard University	Otis College of Art and Design	University of Arkansas-Rich Mountain	University of Rochester
Bowdoin College	Illinois Institute of Technology	Philander Smith College	University of Central Arkansas	University of South Florida
Bradley University	Indiana Univ. -Bloomington	Phillips Community College	University of Central Florida	University of Texas-Dallas
Brown University	John Brown University	Pulaski Technical College	University of Central Missouri	University of Texas-Arlington
Carleton College	Johns Hopkins University	Purdue University	University of Central Missouri	Univ. of Tulsa
Carnegie Mellon University	Kansas City Art Institute	Rensselaer Polytechnic Institute	University of Chicago	University of Vermont
Centenary College	Louisiana Tech University	Rhodes College	University of Connecticut	Univ. of Wisc.-Madison
Coe College	Loyola University (Chicago)	Rice University	University of Florida	Vanderbilt Univ.
College of Wooster	Lyon College	Scripps College	University of Hartford	Washington Univ.-St. Louis
Columbia Univ.	Macalester College	Southern Arkansas University	University of Iowa	Willamette University
Cornell University	Massachusetts Institute of Technology	St. Louis University	University of Memphis	William and Mary
Cornish College of the Arts	Miami University (Ohio)			Williams College
Dennison University				
Drury University				
Eckerd College				
Embry Riddle Aeronautical University				



COLLEGE MAJORS OF CHOICE FOR RECENT GRADUATES (2021-24)





ARKANSAS SCHOOL

FOR MATH, SCIENCES, + THE ARTS

2024-25 SCHOOL PROFILE



COURSE CATALOG AND GRADUATION REQUIREMENTS

MATHEMATICS AND COMPUTER SCIENCE

Mathematics	Pre-Calculus*
Biostatistics	Quantitative Literacy
Bridge to College Algebra	Trigonometry*
Calculus I*, II*, III*	
College Algebra*	Computer Science
Differential Equations*	Advanced Topics in Computer Programming
Discrete Math*	Computer Programming I*, II*, III*
Geometry	Computer Programming
Introduction to Statistical Method*s	Cryptography
Linear Algebra	Game Programming
Number Theory	Graphics Programming

NATURAL AND PHYSICAL SCIENCES

Biology	Chemistry
Anatomy & Physiology I*, II*	Biochemistry
Animal Behavior	Chemistry and Society*
Biological Science*	Chemistry for Scientists & Engineers I*, II*
Botany*	Organic Chemistry
Ecology	Sophomore Chemistry
Microbiology*	
Science of Biology I*, II*	Earth Sciences and Multidisciplinary
Zoology*	Astronomy*
	Circuits I*, II*
Physics	Earth Systems Science*
College Physics I*, II*	Environmental Science
Physics for Scientists & Engineers I, II	Oceanography
Physical Concepts*	

ARTS AND HUMANITIES

History and Social Science	Music
American Military History	Applied Lessons
American Studies I*, II*	Choir
Economics	Music Theory I*, II*
Psychological Disorders	String Ensemble
Psychology	Wind Ensemble
Sociology	
U.S. History*	Visual Art
World History*	2D Art and Design*
	3D Art and Design*
Writing and Literature	Ceramics I, II, III
Ancient Greek Literature*	Digital Photography
British Literature*	Drawing I, II*
Composition I*, II*	Graphic Design*
Gender in Literature*	Humanities Through the Arts*
Philosophy in Literature*	Introduction to Fused Glass
Poetry*	Modern Design & Craft
Sophomore English	Painting I*, II
Special Topics in Literature	
Speech*	Foreign Languages
Survey of World Literature*	French I*, II*, III*, IV*, V*
Yearbook	Japanese I, II, III
	Spanish I*, II*, III*, IV*, V*

CAPSTONES

Creative Writing*	Math Modeling
Film	Music
Humanities	Physical Science
Intro to Engineering & Design*	Research in the Park
Life Sciences	Visual Arts & Design POD*

Arkansas Graduation Requirements

- 4 units English Language Arts
- 3 units Science
- 4 units Mathematics
- 3 units Social Studies
- 1 unit Health/PE
- .5 unit Fine Arts
- .5 unit Oral Communication
- 6 units Career Focus or Content Electives

* Denotes concurrent credit awarded for course

ASMSA College Bridge

Under this specialized framework, students must satisfy all Arkansas Graduation Requirements as well as earn a minimum 30 hours of concurrent college credit through the University of Arkansas at Fort Smith.

3 Semesters of English

Composition I, II, & a Literature Elective

3 Semesters of Mathematics

Minimum of Bridge to College Algebra, College Algebra, & Trigonometry

3 Semesters of Science

From offerings in Biology, Chemistry, Physics, Earth Science, & Computer Science

4 Semesters of a Global Language

When possible, six semesters are recommended

Visual Arts and Design Program of Distinction (POD)

Foundations of Visual Arts

2D Design, 3D Design, Drawing, Digital Arts Elective, & Humanities Through the Arts

Arts Electives

Four courses/seminars of a student's choosing

Senior Seminars

Senior Portfolio & Senior Studio

Capstone Experience

The capstone project and showcase of students' works are facilitated across the full series of courses and not centered within the traditional two-course sequence.